



# SAFETY

## WEB PORTAL DASHBOARD FOR DATA ANALYSIS

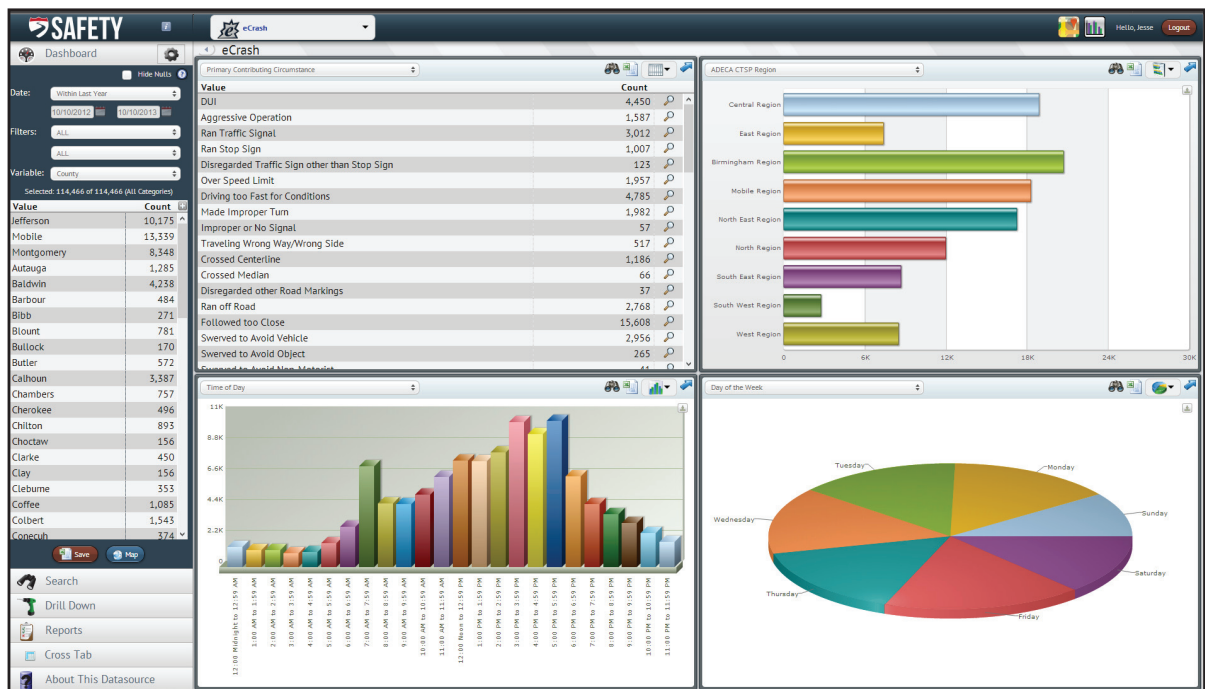
### FEATURES

**SAFETY** is a powerful web portal dashboard that allows users to analyze and visualize electronic data in a variety of ways.

+ This dashboard is designed specifically for traffic safety professionals. It contains crash data including location information and is individually password protected for use by official traffic safety personnel.

+ **SAFETY** was developed at CAPS through sponsorship from the Alabama Office of Highway Safety.

- + Displays summary data
- + Performs dynamic analysis
- + Searches records
- + Applies filters to data
- + Generates maps based on GIS
- + Crash report viewer
- + Exports data, charts & graphs to Excel or image
- + Report Scheduler – weekly, monthly, quarterly
- + Uses rapid CARE Processing Engine
- + Reporting tools – get report emailed to you
- + Batch report downloads
- + Data sources updated nightly



*For more information about developing a dashboard for your electronic data, contact Rhonda Stricklin at [rstricklin@cs.ua.edu](mailto:rstricklin@cs.ua.edu)*



CENTER for ADVANCED  
PUBLIC SAFETY

Contact us:  
**1-866-349-CARE**  
[care@cs.ua.edu](mailto:care@cs.ua.edu)  
[caps.ua.edu](http://caps.ua.edu)

Connect with UACAPS  