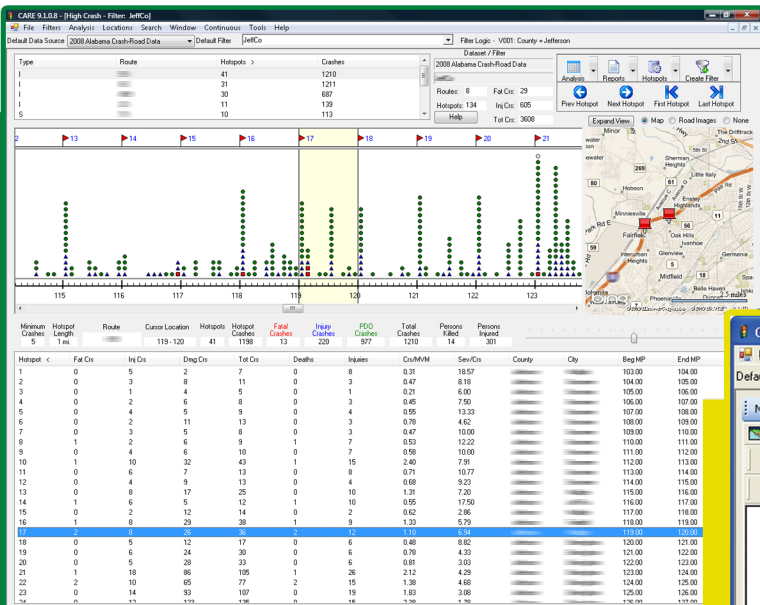
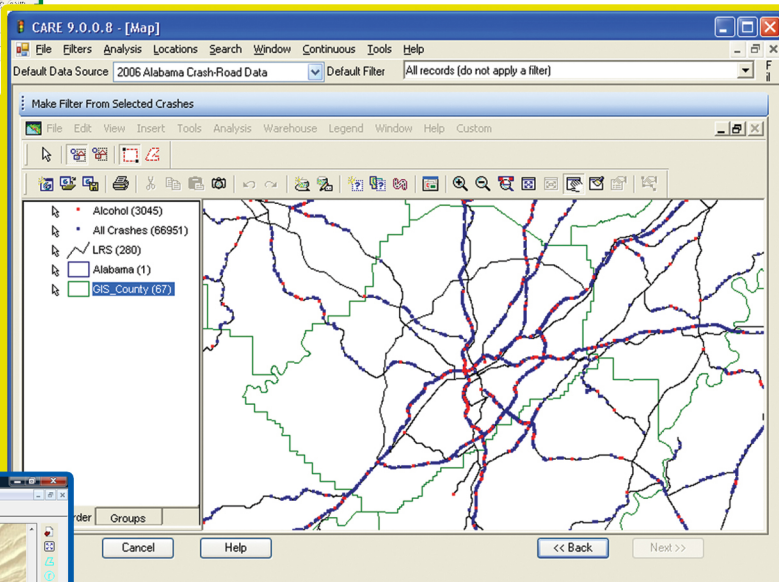


# CRASH MAPPING in CARE 9

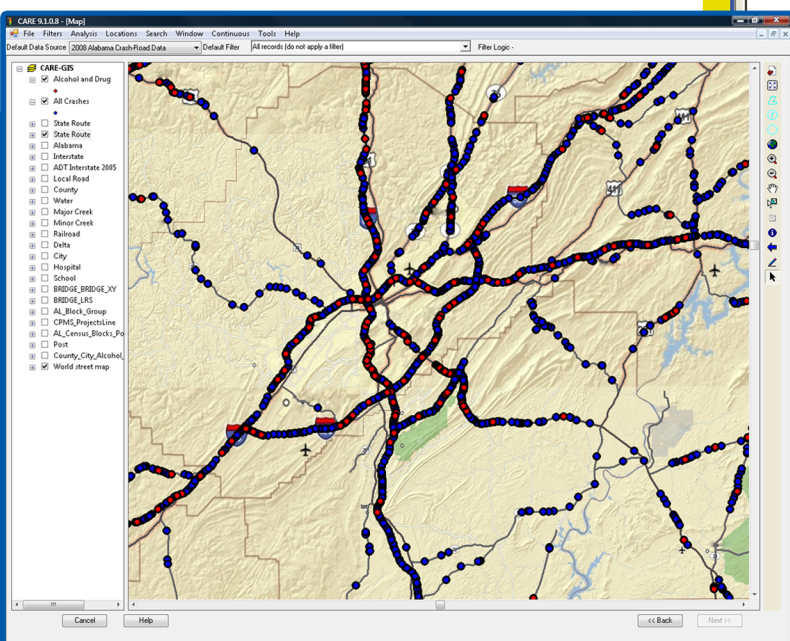


Example of AL 2008 Crash-Road data mapped within CARE using Virtual Earth.

CARE Version 9 is brand new! A great new feature is crash mapping *within* CARE. In version 8, users exported CARE data into ArcGIS and the back into CARE for more analysis. Now, in CARE 9, the user can do mapping without exporting out of the program. Also, we have broadened our mapping capabilities and utilities.



Example of AL 2006 Crash-Road data within CARE using GeoMedia.



Example of AL crash data mapped within CARE using ESRI ArcGIS.



For more information:  
Phone: 1-866-349-CARE  
email: [care@cs.ua.edu](mailto:care@cs.ua.edu)  
<http://caps.ua.edu>