



CENTER *for* ADVANCED
PUBLIC SAFETY

Using CARE Online

Welcome to the Safety Portal

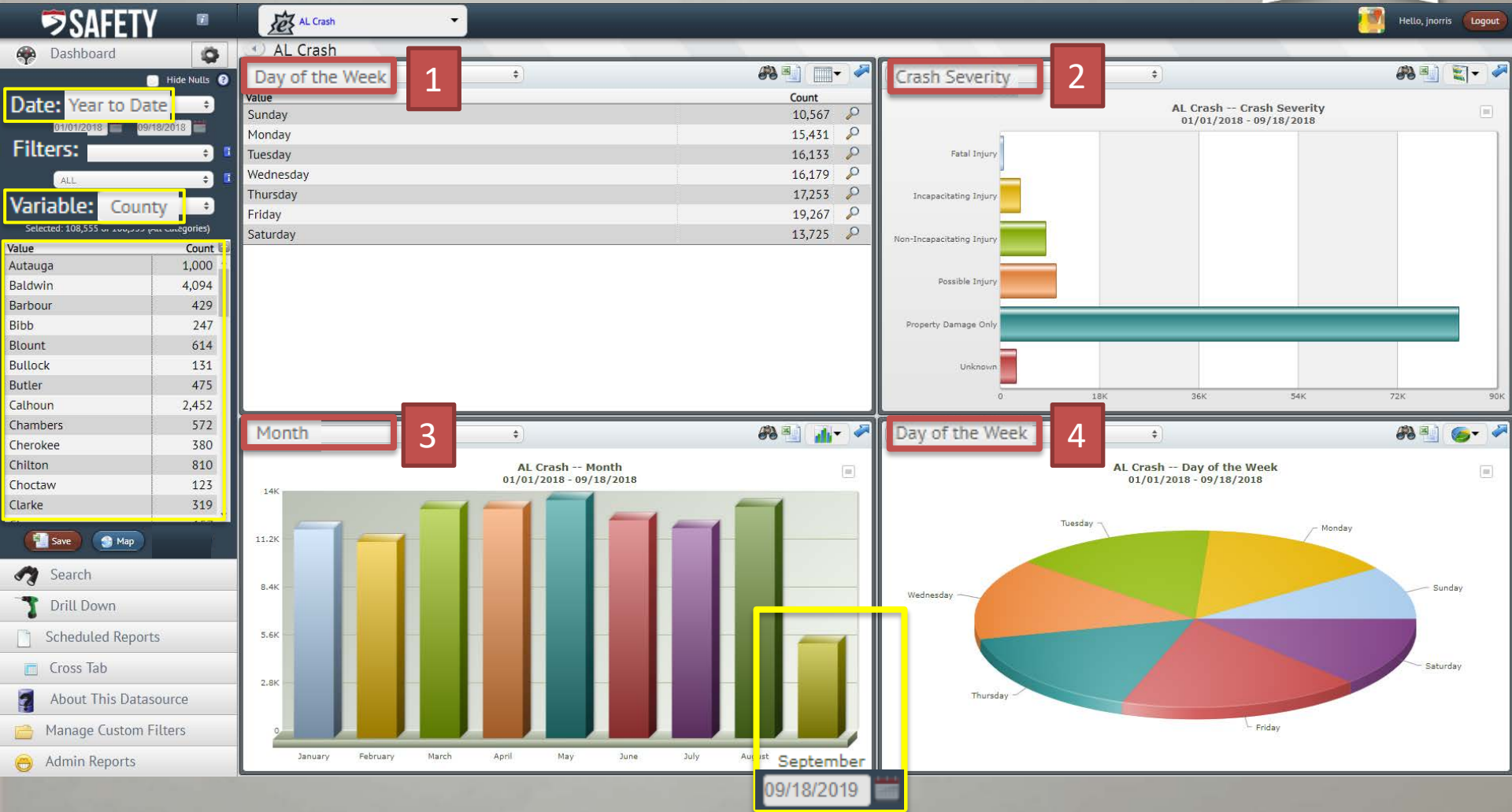
Jesse Norris

THE UNIVERSITY OF
ALABAMA

SAFETY PORTAL: CRASH TRENDS

- Safety Dashboard
 - ✓ Quick look at current trends
 - ✓ See what has been reported
 - Yesterday
 - This month
 - Year-to-date

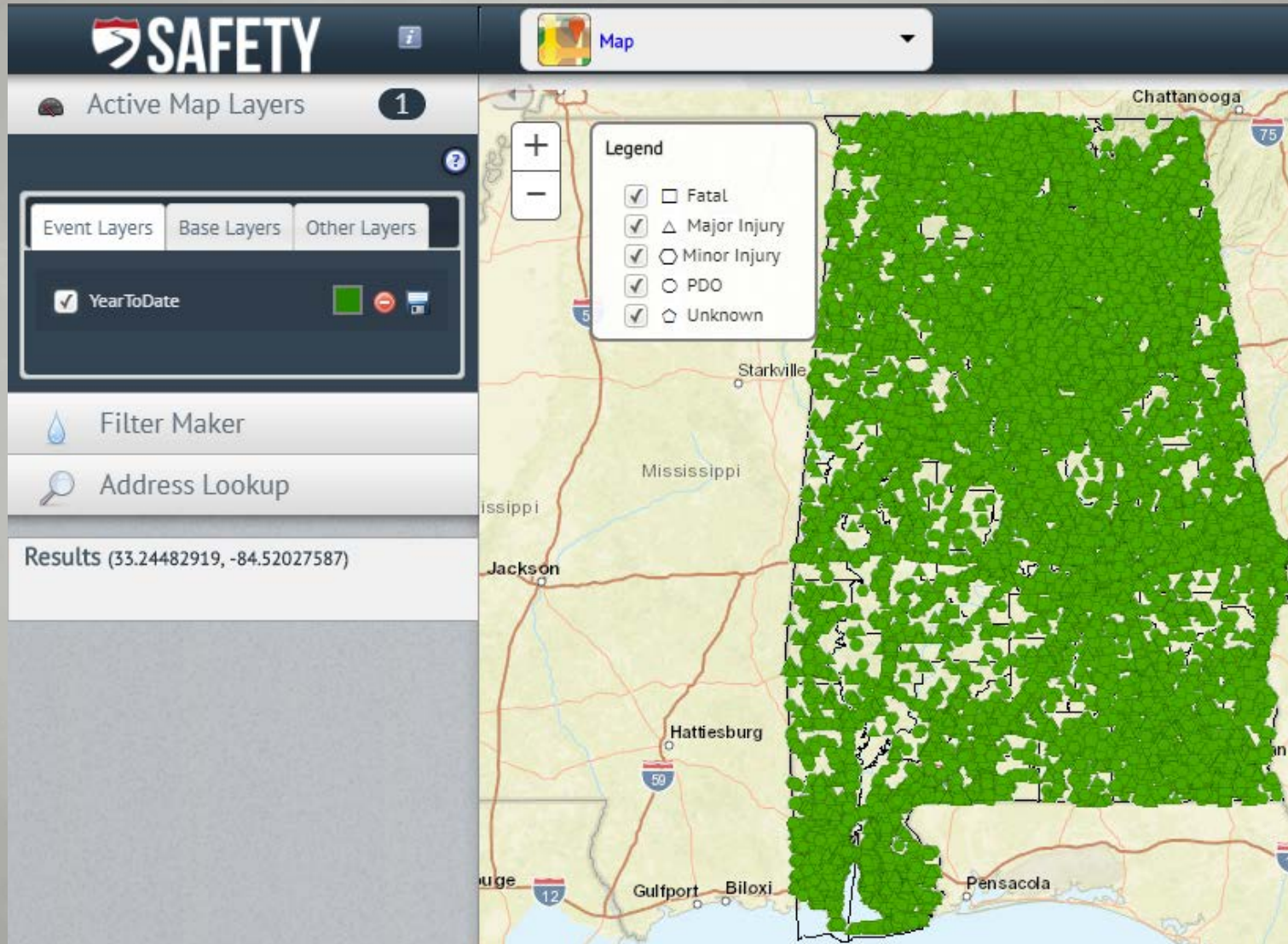
SAFETY PORTAL: DASHBOARD



SAFETY PORTAL: CRASH MAP

- Safety Map
 - ✓ Look at mappable crashes
 - Mileposted routes and Intersections provide best location accuracy
 - 90% can be mapped
 - ✓ Mileposted and intersections is higher
 - ✓ Great way at getting birds-eye view
 - ✓ Use Map Tools to “clear up” and see more crash details.

SAFETY PORTAL: CRASH MAP



SAFETY PORTAL: CRASH MAP

The screenshot displays the SAFETY Portal interface. On the left, a sidebar contains the 'SAFETY' logo, 'Active Map Layers' (1), and tabs for 'Event Layers', 'Base Layers', and 'Other Layers'. The 'Event Layers' tab is active, showing a checked 'All Crash' layer. Below this are 'Filter Maker' and 'Address Lookup' buttons, and a 'Results' section. The main map area shows a satellite view of a suburban area with numerous red circular crash icons. A legend box is overlaid on the map, listing crash types with checkboxes and symbols: Fatal (square), Major Injury (triangle), Minor Injury (hexagon), PDO (circle), and Unknown (pentagon). All are checked. Three callout boxes provide instructions: 'Change the Basemap to Satellite Imagery', 'Change the Crash Icons to different colors', and 'Zoom into an area of interest'. A disclaimer at the bottom left states 'Crash icons are for example purposes only'.

SAFETY

Active Map Layers 1

Event Layers Base Layers Other Layers

☒ All Crash

Filter Maker

Address Lookup

Results

Legend

- ☒ Fatal
- ☒ Major Injury
- ☒ Minor Injury
- ☒ PDO
- ☒ Unknown

Change the Basemap to Satellite Imagery

Change the Crash Icons to different colors

Zoom into an area of interest

Crash icons are for example purposes only

SAFETY PORTAL: CRASH MAP

The screenshot displays the SAFETY Portal interface. On the left, a sidebar contains the 'SAFETY' logo, 'Active Map Layers' (1), 'Event Layers' (Base Layers, Other Layers), 'Filter Maker', 'Address Lookup', and 'Results'. The main map area shows an aerial view of a suburban area with numerous red triangle crash icons. A yellow circle highlights a specific intersection on the map. A legend box is overlaid on the map, showing a list of crash severity levels with corresponding symbols and checkboxes. The legend is titled 'Legend' and includes the following items:

- ☒ Fatal
- ☒ Major Injury
- ☐ Minor Injury
- ☐ PDO
- ☐ Unknown

Crash icons are for example purposes only

Use the Legend to
Filter Crash Severity

Zoom into the intersection

SAFETY PORTAL: DIAGRAM RETRIEVAL



CENTER for ADVANCED
PUBLIC SAFETY

SAFETY

Active Map Layers 1

Event Layers Base Layers Other Layers

☒ ALCrash

Filter Maker

Address Lookup

Results

ALCrash 1

ID:
Year: 2018
Month: June
City: Northport
Reporting Agency: Northport Police Department
Pedestrians Involved: No Pedestrians Involved
First Harmful Event: Collision with Vehicle in Traffic
Manner of Collision: Rear End (front to rear)
Lighting: Daylight
Road Surface: [obscured]

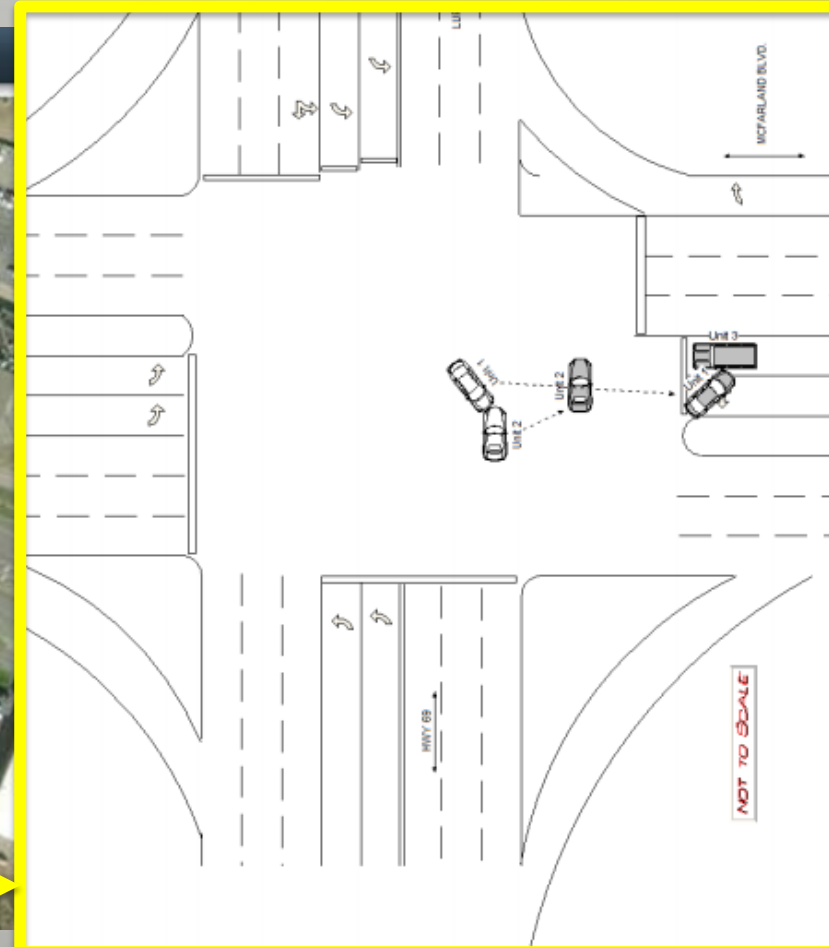
[View Crash](#)

Legend

- ☒ Fatal
- ☒ Major Injury
- ☐ Minor Injury
- ☐ PDO
- ☐ Unknown

Map

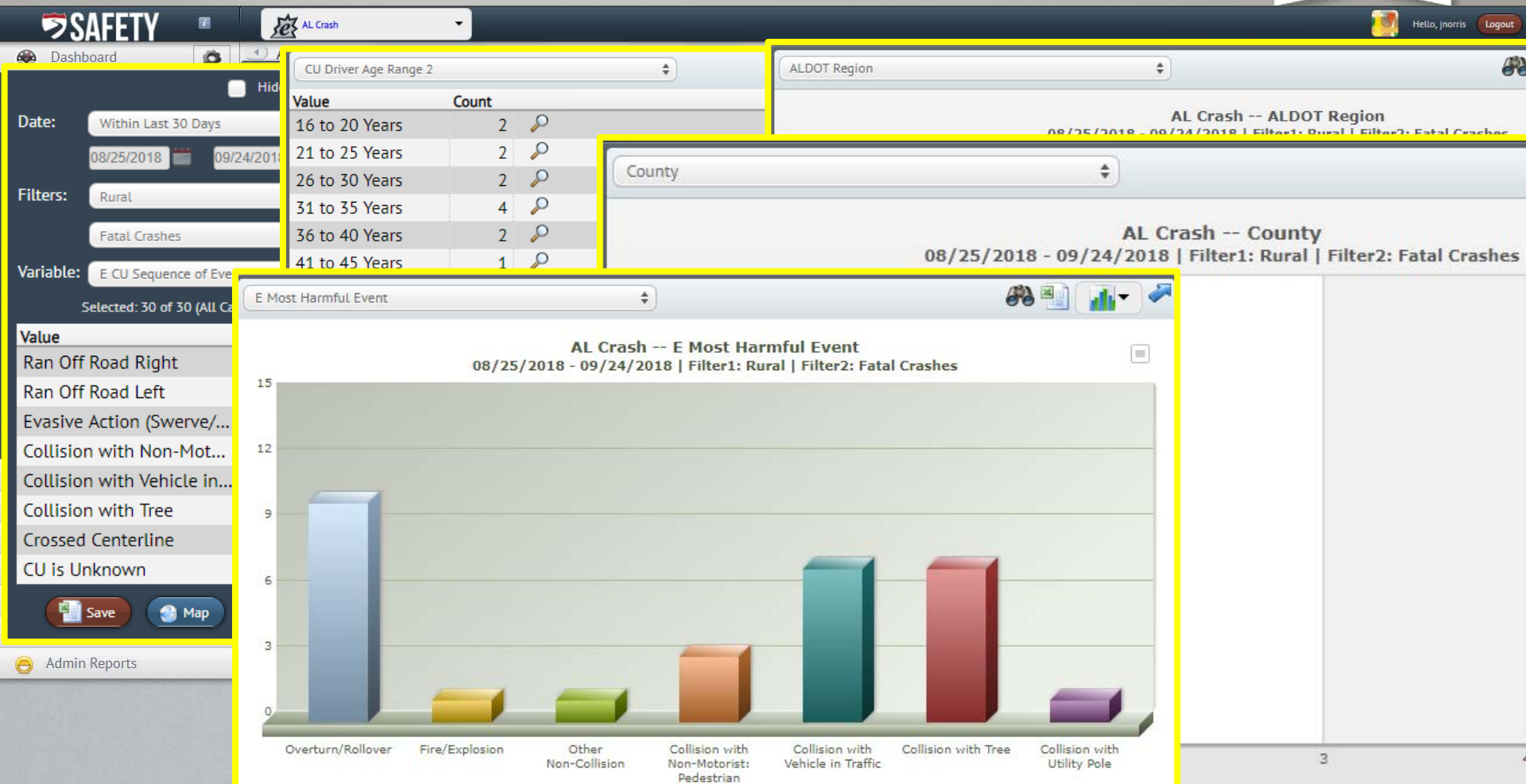
Crash icons are for example purposes only



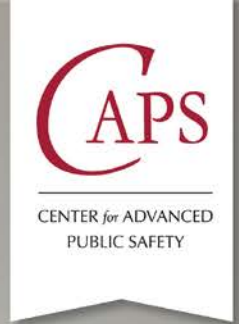
MAP ANALYSIS: QUICK LOOK



SAFETY PORTAL DATA



DATA PROTECTION, RETENTION, AND INTEGRITY – DATA PRIVACY



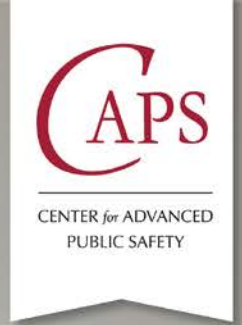
- ALDOT's Crash Data Non-disclosure Policy
 - ✓ Study and research purposes only
 - ✓ Only within agency
 - ✓ Outside agency (i.e. Contractors) transfer of data require recipient comply with ALDOT's Non-disclosure Policy
 - ✓ Specific location data is protected and not for public consumption

Waymon Benifield
ALDOT Safety Administrator
benifieldw@dot.state.al.us

Contact Waymon if there is a question about adhering to this policy or receiving login access.

CONFIDENTIAL INFORMATION - This document is based on information compiled or collected pursuant to 23 U.S.C. §§130 and 148 and other federal safety programs and is exempt from discovery or admission under 23 U.S.C. §§402 and 409.

SAFETY PORTAL CONTACTS



Jesse Norris

Safety User Trainer

Center for Advanced Public Safety (CAPS)

jesse.norris@ua.edu

- Instruction and assistance
- Tips and suggested best practices
- Tech feedback – Keep improving our tools



CENTER *for* ADVANCED
PUBLIC SAFETY

THANK YOU

Any questions or comments?

Jesse Norris
Senior Research Analyst

Center for Advanced Public Safety
Tuscaloosa, AL | (866) 349-2273
caps.ua.edu

Connect with UACAPS 